



# Building Resilient Supply Chains with Connected Data Chains

---

Why AI, visibility, and data estates are the future of supply chain resilience.



# Why Supply Chain Resilience Matters

## **Digital supply chain**



Disruptions from geopolitics, disasters, and economic shifts

---



Need for real-time visibility and proactive response

---



Data-driven agility is now a boardroom priority



# The Top Focus Areas for Supply Chain Leaders

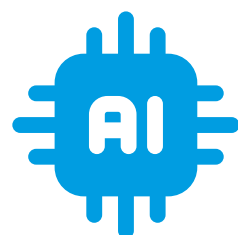
---



End-to-end  
visibility & risk  
management



Cost efficiency in  
warehousing,  
logistics, and  
material flow



AI-driven  
demand  
forecasting and  
decision-making



Automation  
to tackle  
talent  
shortages



# Why a Connected Data Chain is Non-Negotiable

---



Accurate, real-time data improves demand forecasting



Enhances logistics, inventory, and supplier decisions



Powers predictive analytics and AI modeling



# Dynamics 365 Applications

## 5 Pillars for Building a Robust Data Estate

---

- ✓ Executive Sponsorship
- ✓ Customer-Centric Analytics
- ✓ Mature Governance Processes
- ✓ Change Management Readiness
- ✓ Clear Business Value

DynaTech helps you align these  
pillars to your strategy



# Microsoft Tools for Smarter Supply Chains

---



Azure for  
scalable  
platforms



Dynamics 365 SCM  
for operational  
efficiency



Fabric &  
OneLake for  
analytic



Azure AI & Copilot  
Studio for automation

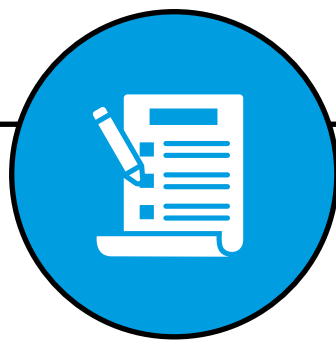


Security with Sentinel  
& Defender

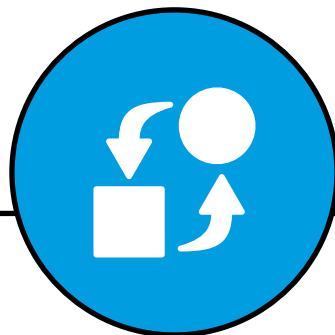
**Interoperable. Scalable.  
Future-ready.**



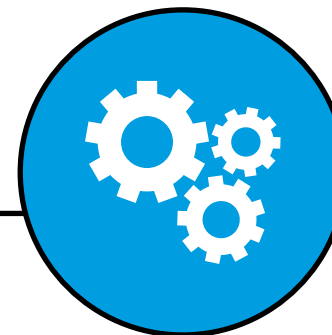
# Prioritize What Matters Most



Start with visibility,  
planning, or  
fulfillment



Avoid  
overwhelming  
change



Incremental wins  
build long-term  
transformation

**Start small. Scale fast.**  
**Succeed smart - with DynaTech Systems**







## Talk to the experts at **DynaTech Systems**

We help you connect your data, processes, and platforms for a smarter, stronger supply chain.

[sales@dynatechconsultancy.com](mailto:sales@dynatechconsultancy.com)