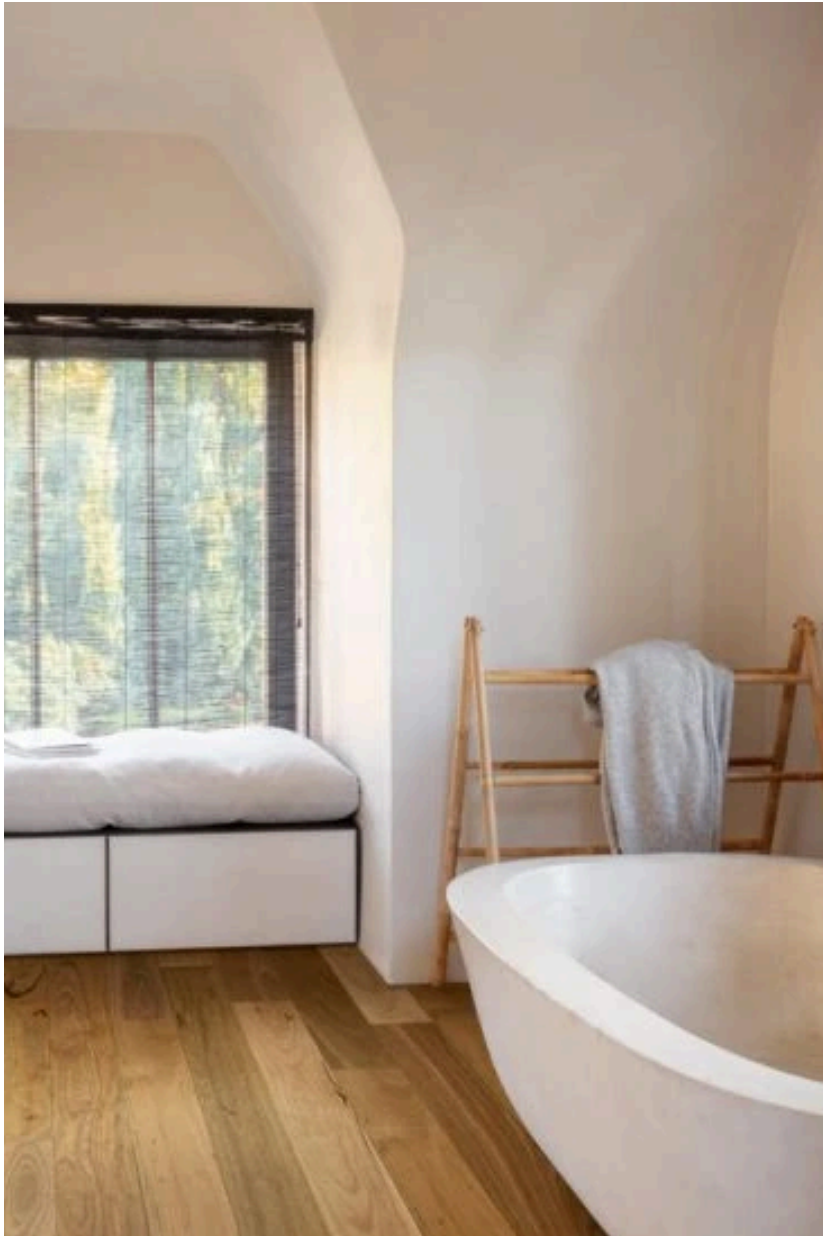


Why Consider Engineered Timber Flooring for Your Home



Floors face daily pressure from foot traffic, furniture movement, and changing indoor conditions. Solid timber can struggle with movement and surface wear over time. **Engineered timber flooring in Melbourne** provides a dependable option that keeps homes comfortable, stable, and visually appealing through every season.

Reliable Construction for Real Living

Engineered timber flooring uses advanced layering to improve strength and balance. This construction method reduces stress caused by temperature changes and humidity. The result is flooring that holds its shape while maintaining the warmth and character of real timber. Homes benefit from a surface that feels solid underfoot and performs well across open plan areas.

Why Engineered Timber Flooring Stands Out

- Holds its shape well in large rooms and hallways over time
- Strong surface protection that suits busy family areas
- Timeless style that fits modern and classic interiors

These qualities make the flooring a practical choice for households that value both appearance and durability.

Practical Investment

Engineered timber flooring choice adds warmth and lasting strength to living spaces. It supports easier care, resists daily wear, and maintains its finish longer than many traditional options. Engineered timber flooring also adds appeal to homes that aim for lasting value.

Conclusion

Engineered timber flooring balances beauty with performance. It suits homes that need dependable flooring that feels natural, looks refined, and handles everyday living without constant maintenance.

Upgrade your home with confidence. Choose engineered timber flooring in Melbourne at **Clique Floors**.



Clique Floors

7/200 Canterbury Rd Bayswater North Vic 3153



0466 112 675



www.cliquefloors.com.au



cliquefloors@gmail.com