

The Evolution of Demi-Fine Luxury: Embracing Longevity and Uncompromising Elegance in Daily Adornment

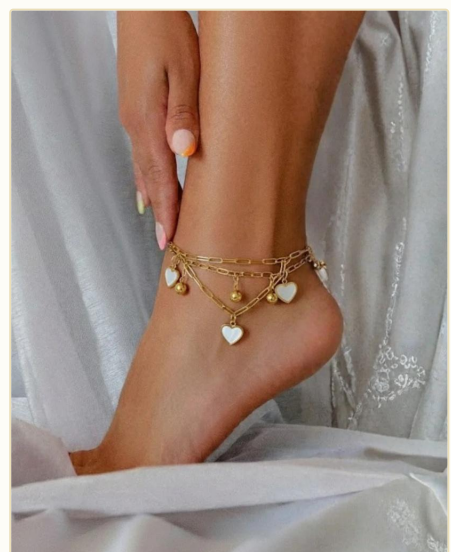
In the contemporary style narrative, the historical divide between delicate fine jewelry and transient fashion pieces has permanently collapsed. Modern jewelry enthusiasts demand personal ornaments that effortlessly blend high aesthetic sophistication with durable material resilience, accommodating the rapid paces of modern lifestyle realities without losing brilliance.

The artisanal designers at **Soul Touch Jewellery** actively champion this lifestyle shift, engineering exquisite seasonal edits protected by advanced molecular defense layers. By pairing classic structural craftsmanship with advanced anti-oxidation surface treatments, their creations retain an unbroken mirror-like brilliance against water exposure, moisture barriers, and daily chemical interactions.

GRACEFUL MOVEMENT: THE MODERN APPEAL OF RESILIENT ANKLETS

Anklets have long evolved past basic seasonal resort styling to become a permanent foundation of chic, year-round personal accessorizing. Incorporating premium, expertly crafted [Anti Tarnish Anklets](#) into your daily style edit guarantees that these delicate chains keep their pristine, brilliant polish through every environment.

Standard metallic string anklets frequently undergo fast darkening and green discoloration due to close friction, atmospheric humidity, or direct contact with ocean water and skincare creams. These premium engineered variants utilize thick, hypoallergenic defensive shields that actively lock out external oxidative compounds. This careful construction ensures that detailed heart charms and classic link styles retain their rich, brilliant gold shine through beach excursions, intense workouts, and daily wear.



BOARDROOM TO EVENING: SCULPTED, CAREFREE WRISTWEAR



Wristwear continuously encounters severe daily physical friction, accidental knocks, and repeated exposure to moisturizing lotions, alcohol-based perfumes, and hand washes. Choosing luxury-grade, expertly sealed **Anti Tarnish Bracelets** allows style-conscious individuals to wear their favorite statement designs continuously without checking for dull spots.

Whether choosing structured pave-lined statement cuffs or delicate, fluid stacking chains, these resilient luxury pieces serve as a flawless extension of your unique personality. The underlying specialized protective layers stop chemical discoloration from developing on the luxury metallic surfaces, maintaining an enduring, beautiful glow that smoothly transitions from corporate afternoon settings into elegant evening galas.

INVESTING IN PERMANENT, SUSTAINABLE BRILLIANCE

Moving toward tarnish-resistant demi-fine jewelry collections marks a deeply deliberate transition toward sustainable luxury consumption. When consumer items hold onto their flawless mirror finish indefinitely, the cycle of fast-fashion disposal drops significantly, helping style curators curating meaningful, long-term personal treasure boxes.

Soul Touch Jewellery continues to refine the space where modern material durability meets high luxury design. By offering exceptional protection across every single piece, the brand frees jewelry lovers from old maintenance schedules—allowing individual elegance to radiate beautifully, naturally, and completely uninterrupted.

The Soul Touch Philosophy

At Soul Touch Jewellery, we compose timeless, highly premium jewelry silhouettes intended for the bold, active modern lifestyle. Marrying elite aesthetic lines with state-of-the-art tarnish resistance, our masterfully curated edits add an effortless touch of understated luxury directly into the rhythm of your everyday story.